

BETA ALPHA PSI XI  
LAMBDA CHAPTER



# The only Accounting Guide you need

Join us on your  
accounting journey

# TABBLE OF CONTENTS

## **01**

Accounting pathways 3-5

## **02**

Major information 6

## **03**

CA information 7-10

## **04**

About BAP 11-13

# PUBLIC VS. PRIVATE ACCOUNTING?

## PUBLIC ACCOUNTING

Involves providing auditing, tax, and consulting services to clients, which can range from individuals to large corporations. Public accountants often work for firms or are self-employed.



## PRIVATE ACCOUNTING

Involves working for a single company and handling its internal accounting needs. Usually does information preparation or budgeting



Woolworths  
the fresh food people



**Public accounting** involves working for accounting firms that **provide services to external clients**. **Private accounting** entails working **within an organisation's internal accounting team**

# TYPICAL GRADUATE PATHWAYS\*



## ACCOUNTING MAJOR (\*or non-accounting with CA bridging courses)

### \*PRIVATE ACCOUNTING

#### FINANCIAL REPORTING & ANALYSIS

Overseeing accounting operations, financial reporting, and ensuring compliance.

#### ASSURANCE & RISK MANAGEMENT

Assessing internal controls, identifying risks, and ensuring compliance.

#### FINANCIAL MANAGEMENT & PLANNING

Providing financial information for managerial decisions, budgeting, and performance analysis.

### \*PUBLIC ACCOUNTING

#### AUDIT & ASSURANCE

Assisting in the examination of financial records, transactions, and controls for accuracy and compliance.

#### TAXATION

Providing specialized tax advice, planning, and strategies to minimize tax liabilities.

#### CONSULTING & ADVISORY

Assisting clients with financial, operational, and strategic challenges.

### ACADEMIA

#### TEACHING & INSTRUCTION

Teaching courses as part-time or full-time faculty. And/or conducting influential research, and contributing to curriculum development.

#### RESEARCH

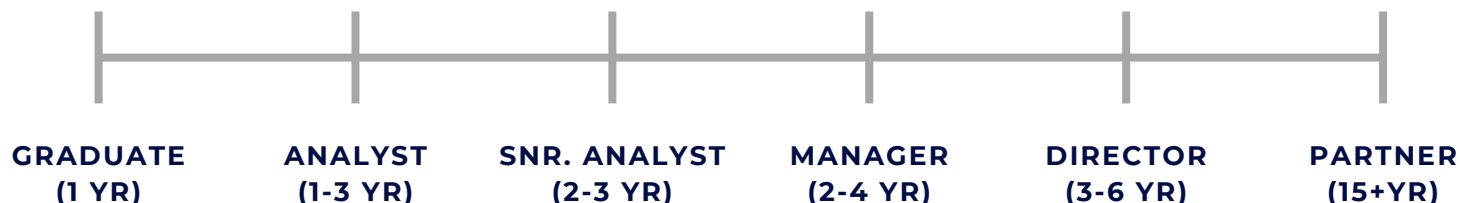
Focusing primarily on research, securing grants, and contributing to the academic community's knowledge.

\*THIS IS A NON-EXHAUSTIVE LIST. THERE ARE MANY OTHER CAREER PATHWAYS WITHIN AND OUTSIDE THE ACCOUNTING INDUSTRY. STUDENTS SHOULD ALSO DO THEIR OWN RESEARCH FOR ACCURACY.



# STANDARD CAREER TRAJECTORY\*

## PUBLIC ACCOUNTING



## PRIVATE ACCOUNTING



## ACADEMIA



\*TIMELINE FOR CAREER PROGRESSION CAN BE INFLUENCED BY A VARIETY OF FACTORS, INCLUDING AN INDIVIDUAL'S SKILLS, ACCOMPLISHMENTS, WILLINGNESS TO TAKE ON NEW CHALLENGES, AND THE ORGANIZATION'S STRUCTURE. SOME INDIVIDUALS MAY MOVE MORE QUICKLY THROUGH THE STAGES DUE TO EXCEPTIONAL PERFORMANCE, WHILE OTHERS MIGHT TAKE LONGER IF THEY SEEK ADDITIONAL EDUCATION OR EXPERIENCE BEFORE ADVANCING.

# MAJOR REQUIREMENTS



## Accounting Major

PRE-REQUISITE SUBJECTS

...with accreditation

1 yr

**ACCOUNTS REPORTS AND ANALYSIS - ACCT10001**



**Business Law**  
BLAW10001

**INTRODUCTORY FINANCIAL ACCOUNTING - ACCT10002**

2 yr

**COST MANAGEMENT - ACCT20001**



**Corporate Law**  
BLAW20001

**INTERMEDIATE FINANCIAL ACCOUNTING - ACCT20002**

**ACCOUNTING INFORMATION, RISK AND CONTROLS - ACCT20007**

3 yr

**ANALYSIS OF FIRMS AND FINANCIAL STATEMENTS - ACCT30001**



**Taxation Law**  
BLAW30002

**ENTERPRISE PERFORMANCE MANAGEMENT - ACCT30002**

**AUDIT AND ASSURANCE SERVICES - ACCT30004**



# WHO IS CA ANZ

A Chartered Accountant is a globally recognized professional in accounting, auditing, tax and financial management. Chartered accountants uphold high ethical standards and commit to continuous professional development.

This designation opens diverse career opportunities in various sectors and is respected for its expertise in international financial regulations. Being a CA signifies a commitment to professionalism, lifelong learning and versatile career potential.

They aim to create prosperity for everyone and offer various opportunities, programs, and memberships.



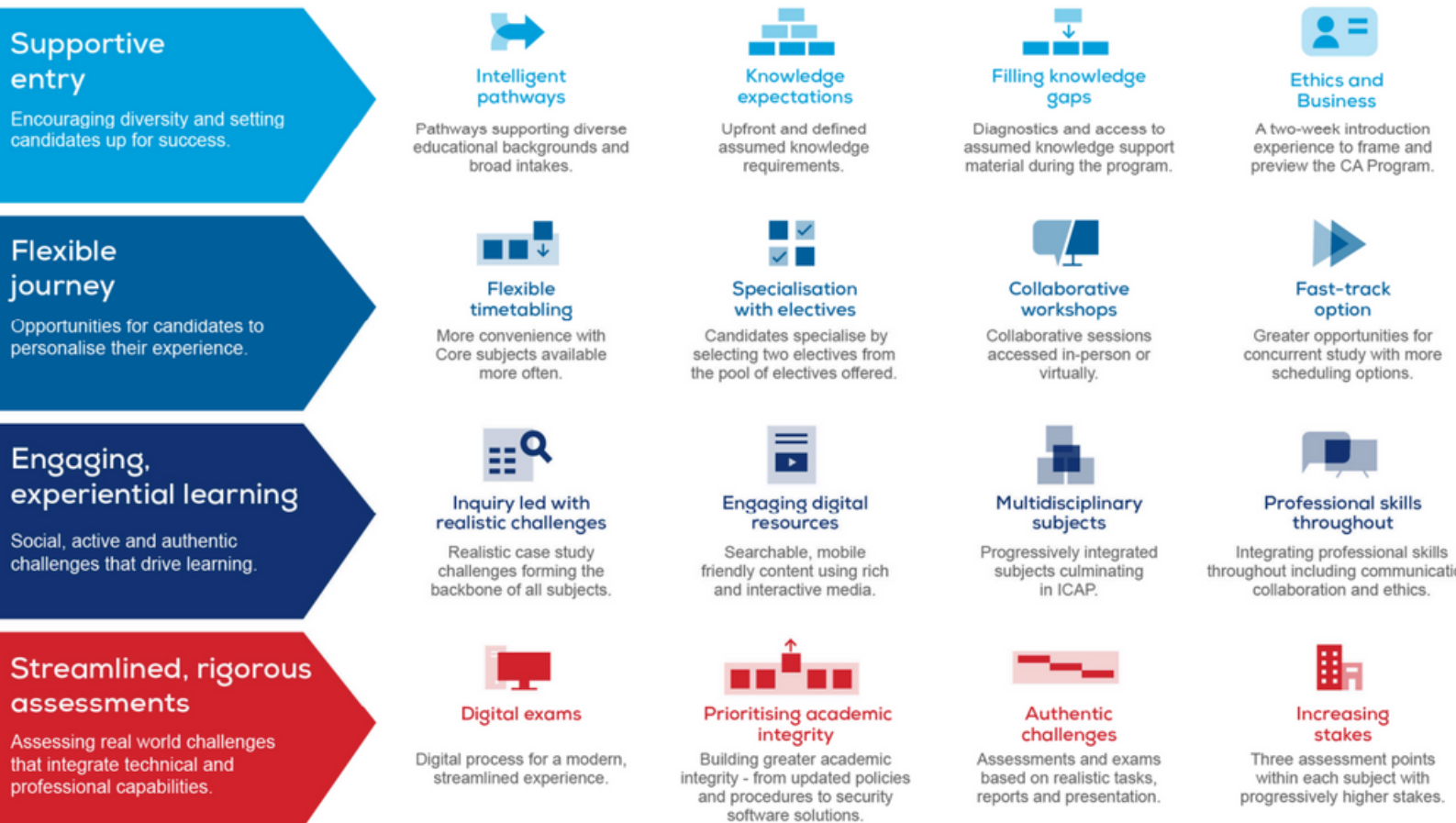
*CA ANZ Represents*

**134,000 +**

*members in Australia, New Zealand and overseas*

*For more information about CA ANZ:  
<https://www.charteredaccountantsanz.com>*

## CHARTERED ACCOUNTANT PROGRAM FEATURES



## PROFESSIONAL SKILLS TO BE AMPLIFIED





## CHARTERED ACCOUNTANTS PROGRAM AT CA ANZ

1. Are you eligible to become a Chartered Accountant?

2. Apply for Provisional Membership

3. Enrol in you CA Program modules

4. Apply for full CA ANZ Membership

[Click here for more information](#)



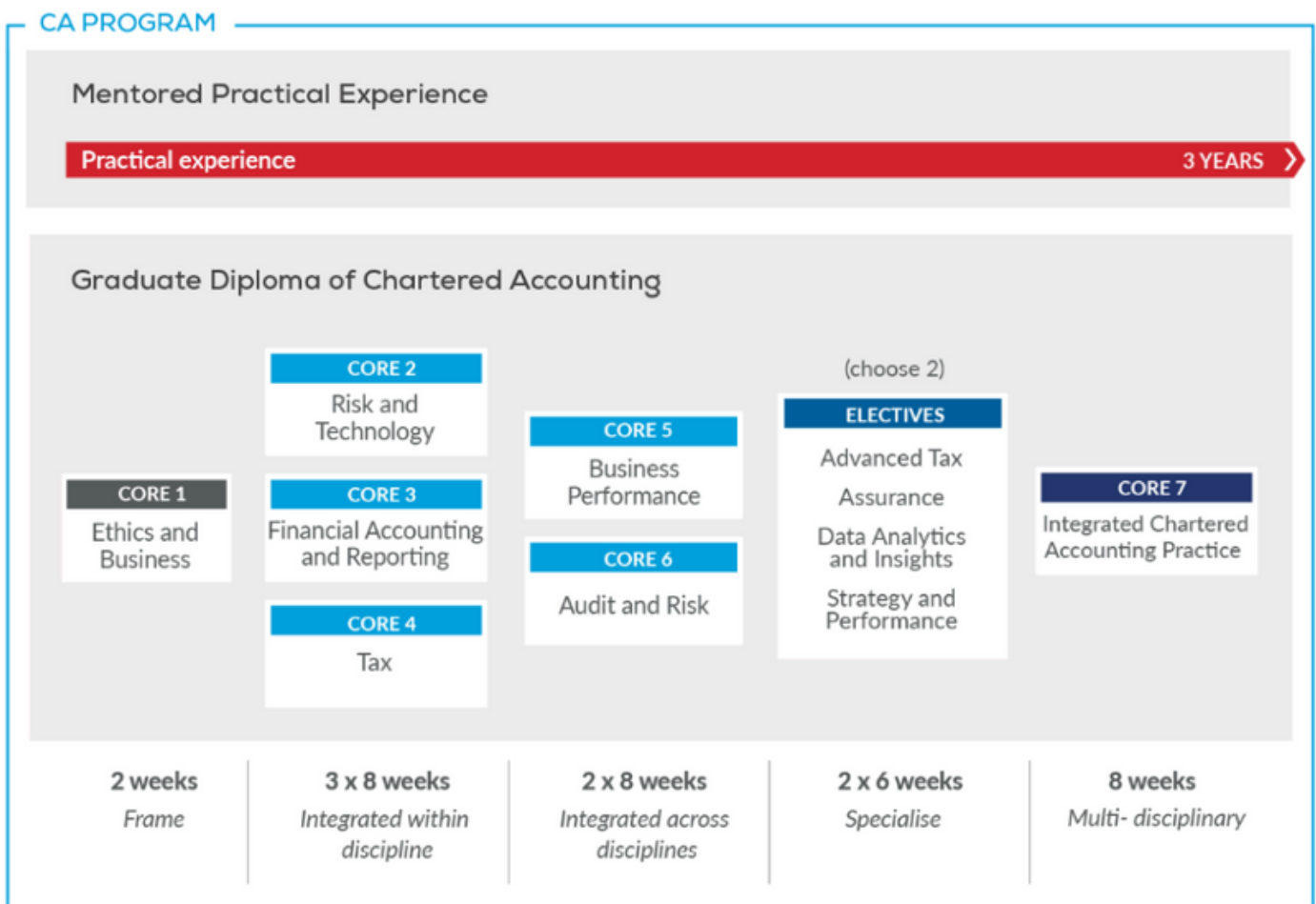
### CA program admission criteria

- Academic criteria and English language requirements
- Admission to provisional membership of Chartered Accountants ANZ
- Relevant visa for non-resident Australian based applicants
- Alternative entry pathways available if not all academic criteria is met
- Complete a fit and proper persons' declaration

### Alternative entry options for non-accounting degree

- Complete CA Program subjects while not in employment
- Start CA Program subjects while completing final bridging units
- Use Flexible Pathways to access the CA Program without an accredited degree
- Start mentored practical experience before, during, or after commencing the GradDipCA

## CA Program - 7 Cores and 2 Electives



### Apply for the CA Program:

1. Complete the online Provisional CA application form and submit with your academic documentation
2. Receive approval via email from our assessment team that you are eligible to enrol in your first subject.
3. Enrol in your first subject(s) and if you are currently employed in a relevant accounting role, start tracking your Mentored Practical Experience.



# ABOUT BAP XI LAMBDA CHAPTER

Beta Alpha Psi (BAP) founded in 1919 for financial information professionals whereas BAP Xi Lambda Chapter was founded in 2017 for accounting, finance and information individuals to further expand the industry and pursue this field.

Our mission is to provide the extraordinary opportunities available and encourage a sense of responsibility in the professional setting.

We offer networking events in various forms that facilitate self-development and offer regular community service opportunities to further enhance employability while benefiting the overall society.

## ***Benefits of joining the Beta Alpha Psi:***

- Participate in inter-varsity competitions domestically and internationally
- Join a globally recognised network for financial information professionals
- Learn relevant job-specific skills and stay up-to-date with the most recent jobs, internships and global developments

***Visit our website:***

***<https://www.betalphapsi.com.au/>***



# MEMBERSHIP

*Join us NOW!*



## Associate membership

- Open to all students from University of Melbourne (any level/ year)
- \$20 membership fee

### Benefits:

- Attend Beta Alpha Psi's events
- Receive direct notifications regarding internships, scholarships, and events with our sponsors and collaborators

## Full membership

- At least 80% attendance across all events
- At least a 70% WAM
- Open to all majors

### Benefits:

- Fully funded lifetime membership
- Access to BAP intranet, with over 300 chapters in the world
- Access to exclusive events
- Right to use organisation name (ex. on LinkedIn)

**We are hiring!**



- **Apply now:** Send your CV and expression of interest to [recruitment@bapunimelb.com.au](mailto:recruitment@bapunimelb.com.au)



# REACH OUT TO US!



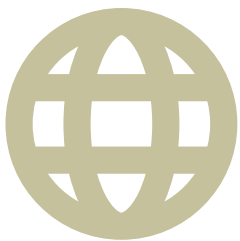
[@bapunimelb](https://www.instagram.com/bapunimelb)



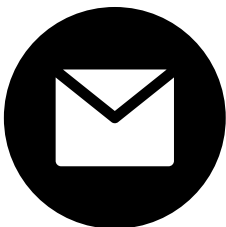
[Beta Alpha Psi - Xi Lambda,  
University of Melbourne](#)



[Beta Alpha Psi - University of  
Melbourne Chapter](#)



[betaalphapsi.com.au](http://betaalphapsi.com.au)



[contactus@bapunimelb.com.au](mailto:contactus@bapunimelb.com.au)